



**On the corner  
in 3 Mile**



# Farm Bureau<sup>®</sup> INSURANCE

FARM BUREAU MUTUAL INSURANCE COMPANY OF IDAHO

**PROTECTING WHAT MATTERS MOST  
PANHANDLE INSURANCE & FINACIAL SERVICES**

**Coleman Frank & Kendon Perry**

**Office: 208-267-5502**

**6476 S. Main St., Bonners Ferry, ID.**



# ALLIANCE

TITLE & ESCROW

*Yes, it matters where you close.*

# BADGER BUILDING CENTER



## PROUD SUPPORTERS OF 4-H & FFA!

Bonnars Ferry, ID  
34 Swift Lane  
208.267.0002

Sagle, ID  
260 Chevy St.  
208.263.0253

Post Falls, ID  
2813 E. Seltice Way  
208.773.1848

Kalispell, MT  
2930 Hwy. 2 East  
406.755.3820

STORE HOURS: MON-FRI 7:30am - 5:00pm | SAT 8:00am - 4:00pm  
SUN 8:00am - 4:00pm (Bonnars & Sagle Locations Only)

[www.BadgerBuilding.com](http://www.BadgerBuilding.com)

# ENTERTAINMENT

## Talent Team Performing Arts

Talent Team Performing Arts is a non-auditioned performing group which produces, fun, family friendly shows while helping participants become triple threats (skills in singing, dancing and acting). Talent Team productions are original and enable performers to grow at their own pace. The more they stick with it the better they become.

This year's title is "Movie Magic". You will enjoy a variety of songs like "Animal crackers in my soup", "SpongeBob", "We've got the beat" and many more. You won't want to miss this show stopping performance!

Performance times published in the daily schedule Wednesday- Saturday.



## Putt Putt Mini Golf

Get ready to tee off on an adventure at the 2024 Boundary County Fair! We are thrilled to unveil our latest addition: a delightful 9-hole Putt Putt Mini Golf course set against the picturesque backdrop of the north lawn. Best of all, this exciting attraction is generously sponsored by the Boundary County Fair Board, making it absolutely free for our beloved community to enjoy.

Come join us from Thursday, August 8th to Saturday, August 10th, and experience the joy of mini-golfing from 11 am to 8 pm each day. It's the perfect opportunity for families, friends, and enthusiasts of all ages to bond, laugh, and create unforgettable memories. See you on the green!

*Thank you to our county residents who support our fair*

- ◆ *Through the generous volunteer hours given to Open Class, 4-H and FFA*
- ◆ *By sponsoring the many fair awards, contests and games AND...*
- ◆ *By taking the time to attend our great county fair!! Our county is the BEST!*

Family Dining House Crafted Beer

(208) 267 - HOPS Kootbrew.com  
6424 Riverside St. Bonners Ferry, ID

*Brian Wood*  
Owner

Concrete and Precast Products  
Rock Crushing, Road Work  
Sand and Gravel

**B.F. Redi-Mix, Inc.**

**Chris Copley**  
Manager

P.O. Box M (208) 267-7559  
6434 Arizona C: (208) 290-7437  
Bonners Ferry, ID 83805 bfredimix@hotmail.com

three great stores ...

Earning your trust for  
over 78 years!

# ONE big campus



Sandpoint Furniture & Mattress



Living Room, Bedroom, Dining  
Room, Home Office, Area Rugs,  
Lamps & Accessories

208-263-5138  
SANDPOINTFURNITURE.COM

Carpet One Floor & Home



Hardwood, Luxury Vinyl Plank,  
Carpet, Area Rugs, Tile, Professional  
Installation

208-263-5138  
SANDPOINTFURNITUREPONDERAY.COM

Selkirk Glass & Cabinets



Cabinets & Kitchen Design, Glass  
Showers, Windows & Window Repairs,  
Interior & Exterior Doors + MUCH MORE

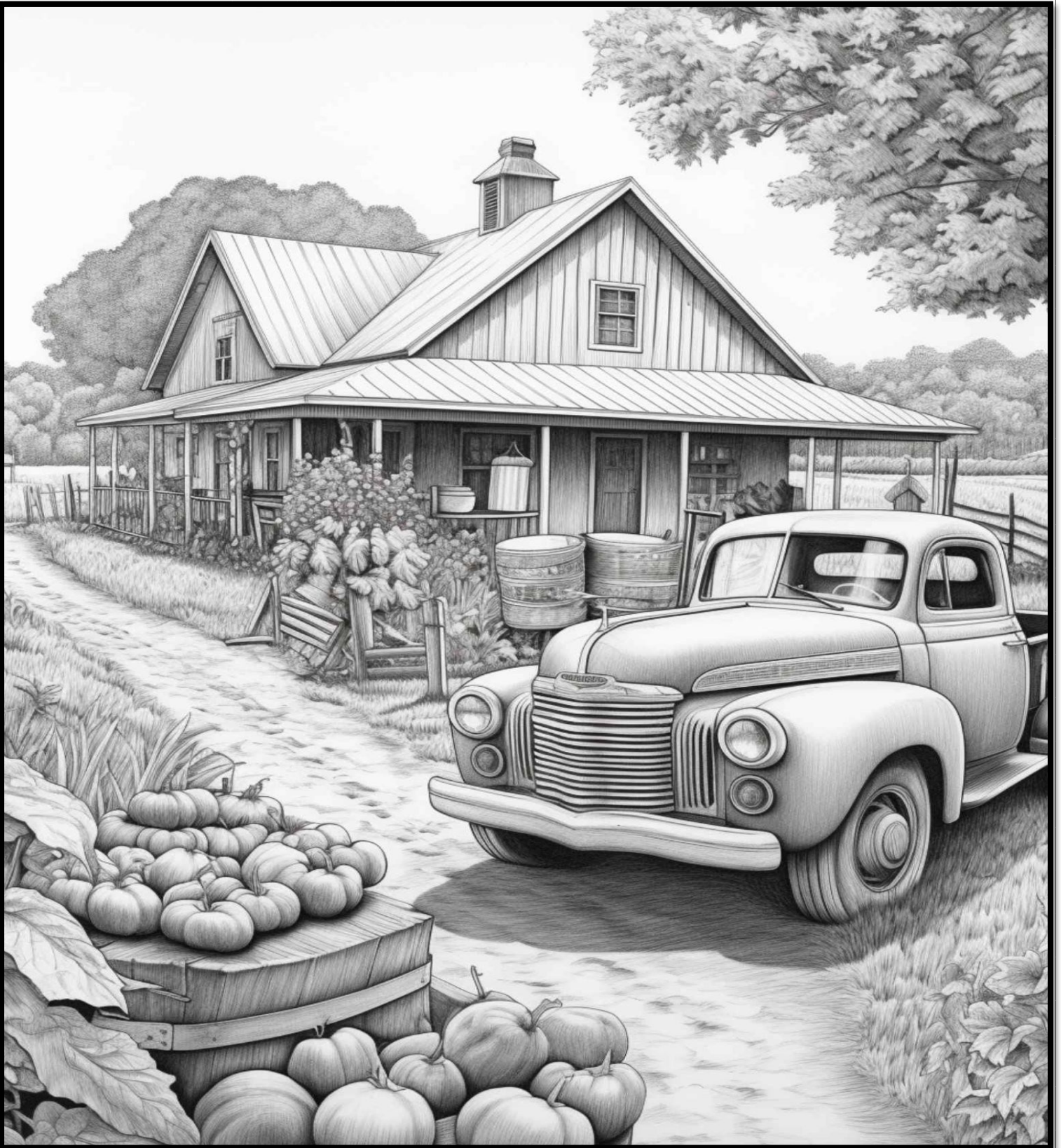
208-263-7373  
SELKIRKGLASSANDCABINETS.COM

Over 40,000 sq ft. of showrooms featuring the finest products for your home, right here in Ponderay!



401 Bonner Mall Way, Ponderay, Idaho  
**208.263.5138**  
Mon-Fri 8am-5pm | Sat 9am-5pm | Closed Sundays





## Adult Coloring Page

Name: \_\_\_\_\_

# Line Point Printing

Formerly Photos Plus

New owners, New location, Expanded services

We offer many services:

Digital printing including sizes:

3½x5, 4x6, 5x7, 8x10, 8x12 or collages

Big photos, posters & blueprints (up to 36")

Passport photos

Slides to print or digital

Photo reprints from scanned photos

Photo editing

Photo announcements

Photocopies

Laminating

Banners & vinyl up to 30" on one side,

Stickers and full color designs for t-shirt

Video to DVD:

8mm reels, 8mm tapes,

MiniDV and VHS



And Much More

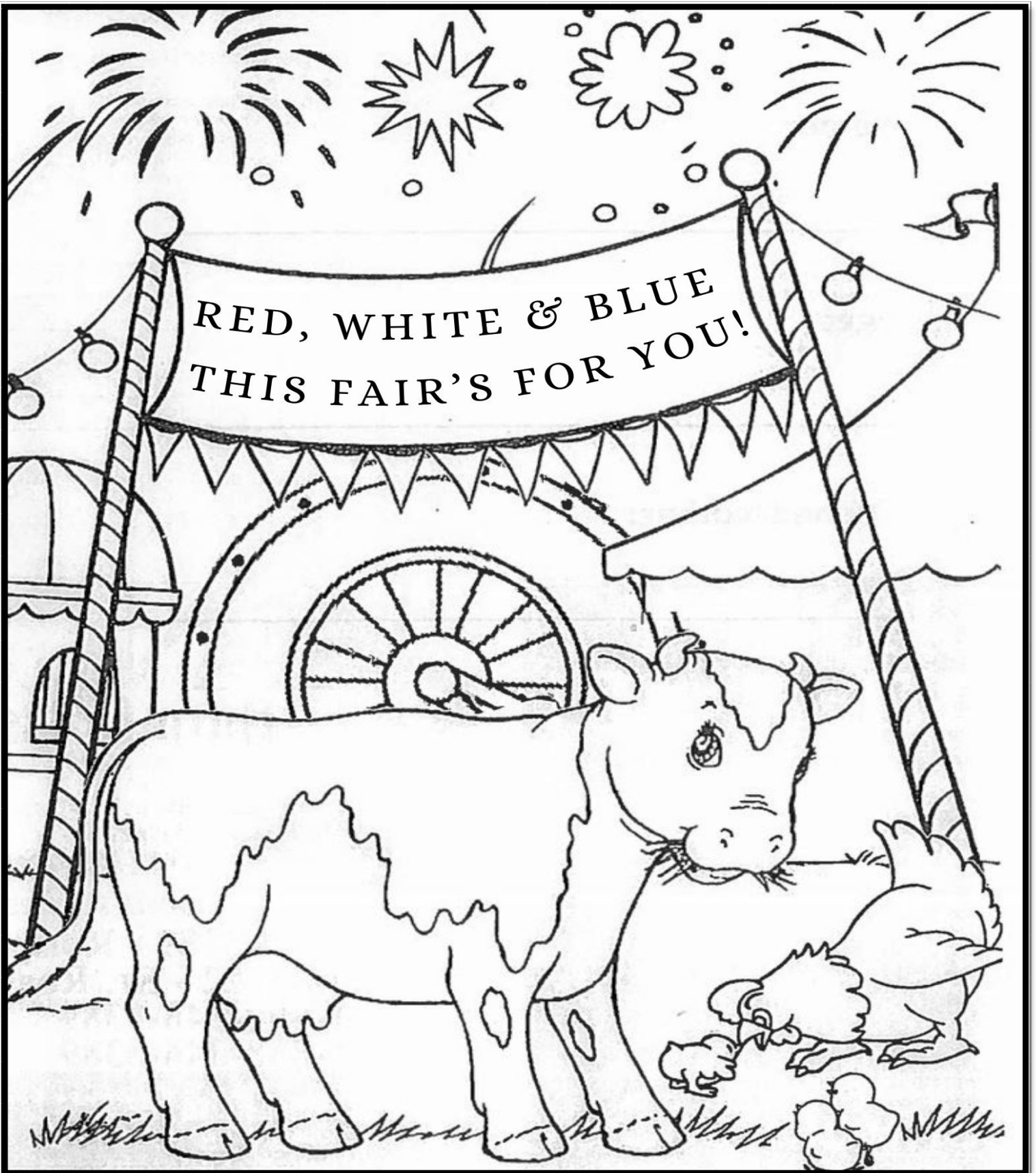


7219 Main St  
Bonners Ferry  
208.267.5115



Scan for directions





Name: \_\_\_\_\_

Age: \_\_\_\_\_



# OPEN CLASS ANIMALS

## DEPARTMENT A BEEF CATTLE

## DEPARTMENT B DAIRY CATTLE

Superintendent: Liz Wood 208-267-6170

Superintendent: Liz Wood 208-267-6170

**Entry Check In: Monday, August 5th, 3-6 pm**  
**Entry Check Out: Saturday, August 10th, 7-9 pm**  
**See General Rules on pages 28-29**

**Entry Check In: Monday, August 5th, 3-6 pm**  
**Entry Check Out: Saturday, August 10th, 7-9 pm**  
**See General Rules on pages 28-29**

Premiums: 1<sup>st</sup> - \$8; 2<sup>nd</sup> - \$4; 3<sup>rd</sup> - \$2

Premiums: 1<sup>st</sup> - \$8; 2<sup>nd</sup> - \$4; 3<sup>rd</sup> - \$2

CLASS A - SHORTHORN  
CLASS B - POLLED HEREFORD  
CLASS C - HEREFORD  
CLASS D - BLACK ANGUS  
CLASS E - CHAROLAIS  
CLASS F - SIMMENTAL  
CLASS G - LIMOUSIN  
CLASS H - OTHER PUREBRED  
CLASS I - CROSSBREDS  
CLASS J - FEEDER CALF  
LOT 1 - Bull: 6 months and under  
LOT 2 - Bull: 7 - 12 months  
LOT 3 - Bull: 13 - 18 months  
LOT 4 - Bull: 19 - 23 months  
LOT 5 - CHAMPION and RESERVE CHAMPION BULL  
CALF: 1st and 2nd place winners Lots 1-4  
LOT 6 - Bull: 2 years old  
LOT 7 - Aged Bull: 3 years and older  
LOT 8 - CHAMPION and RESERVE CHAMPION SENIOR  
BULL: 1st and 2nd place winners Lots 6 & 7  
LOT 9 - CHAMPION AND RESERVE BULL:  
1st and 2nd place winners Lots 5 & 8  
LOT 10-Heifer: 6 months and under  
LOT 11-Heifer - 7-12 months  
LOT 12-Heifer - 13-18 months  
LOT 13-Heifer - 19-23 months  
LOT 14-CHAMPION and RESERVE CHAMPION HEIFER  
CALF: 1st and 2nd place winners Lots 10-13  
LOT 15-Cow - 2 years old  
LOT 16-Aged Cow - 3 years and over  
LOT 17-Cow with Nursing Calf  
LOT 18-CHAMPION and RESERVE CHAMPION SENIOR  
COW: 1st and 2nd place winners Lots 15-17  
LOT 19-CHAMPION and RESERVE CHAMPION BREED  
COW: 1st and 2nd place winners Lots 14 & 18  
LOT 20-Pair of calves: Lots 1-2, 10-11, either sex  
LOT 21-Pair of Yearlings: Lots 3-4, 12-13, either sex  
LOT 22-Get of Sire: Three head, either sex  
LOT 23-Produce of Dam: Two offspring of dam  
LOT 24-Best 3 Head of Each Breeder: Same breed or cross  
breed  
CLASS K -GRAND CHAMPION and RESERVE GRAND  
CHAMPION OVERALL BREEDS, BULL  
1st and 2nd place winners Lot 9 each breed  
CLASS L -GRAND CHAMPION and RESERVE GRAND  
CHAMPION OVERALL BREEDS, COW  
1st and 2nd place winners Lot 19 each breed

CLASS A - HOLSTEINS  
CLASS B - JERSEYS  
CLASS C - GUERNSEY  
CLASS D - MILK, SHORTHORN  
CLASS E - AYRSHIRES  
CLASS F - GRADE FEMALES  
LOT 1 - Cow, 3 years and over  
LOT 2 - Cow, 2 years old  
LOT 3 - Cow/calf pair  
LOT 4 - Heifer, Yearling  
LOT 5 - Heifer, Calf  
CLASS G - GRADE MALES  
LOT 1 - Bull, over 2 years  
LOT 2 - Bull, under 2 years and over 1 year



**SOS Diesel Specialist**  
**(208) 267-1231**  
**11 Arbor Ln**  
**Moyie Springs, ID**  
[Samonsitesos@hotmail.com](mailto:Samonsitesos@hotmail.com)

# OPEN CLASS ANIMALS

## DEPARTMENT C DAIRY GOATS

Superintendent: Jessi Miller 949-278-1768

Entry Check In: Monday, August 5th, 3-6 pm  
Entry Check Out: Saturday, August 10th, 7-9 pm  
See General Rules on pages 28-29

Premiums: 1<sup>st</sup> - \$5, 2<sup>nd</sup> - \$3, 3<sup>rd</sup> - \$2

- CLASS A - SAANENS
- CLASS B - TOGGENBURGS
- CLASS C - NUBIANS
- CLASS D - LA MANCHA
- CLASS E - NIGERIAN DWARF
- CLASS F - OTHER PURE BREEDS
- CLASS G - CROSSBREEDS
  - LOT 1 - Doelings, under 6 months
  - LOT 2 - Doelings, 6 months to 1 year
  - LOT 3 - Does, 1 - 2 years, dry
  - LOT 4 - Does, 2 years and under, Milking
  - LOT 5 - Does, 3 years and over
  - LOT 6 - Get of Sire, Does, any age, same sire
  - LOT 7 - Buck, under 6 months

## DEPARTMENT D FLEECE BEARING GOATS

Superintendent: Jessi Miller 949-278-1768

Entry Check In: Monday, August 5th, 3- 6 pm  
Entry Check Out: Saturday, August 10th, 7-9 pm  
See General Rules on pages 28-29

Premiums: 1<sup>st</sup> - \$5, 2<sup>nd</sup> - \$3, 3<sup>rd</sup> - \$2

- CLASS A - ANGORA
  - LOT 1 - Doelings, under 6 months
  - LOT 2 - Doelings, 6 months to 1 year
  - LOT 3 - Does, 1 - 2 years, dry



# Circle **B** Trailer Sales



**208-267-0704**

**www.circlebtrailers.com**



**Beef ~ Lamb ~ Hay**

**Kim**  
**(208) 946-7668**

**Trevor**  
**(208) 290-1671**

[www.cushmanfamilyfarm.com](http://www.cushmanfamilyfarm.com)

**Callie's Niche**  
208-267-1583 6429 Bonner St. Bonners Ferry

**The Sewing Shop**  
PO Box 1153  
Bonners Ferry  
Idaho 83805

MENDING AND ALTERATIONS  
INDUSTRIAL SEWING  
FABRICS · NOTIONS · HARDWARE

**BEEHAVEN**  
FLOWER FARM

Local Grower & Florist

- Wedding & Events
- On-Farm Classes
- Everyday Flowers
- DIY Flowers
- Local Delivery
- Farm Stand

Floral Studio & Farm Stand  
2431 Moon Shadows Rd.  
Bonners Ferry, ID 83805  
208.267.4136  
[www.beehavenfarm.com](http://www.beehavenfarm.com)

**DEPARTMENT E**  
**POULTRY**  
**FREE AVIAN FLU TESTING 7/24**  
**2-6 PM @ Fairgrounds**

Superintendent: Amy Tye 208 267-2233

**Entry Check In: Monday, August 5th, 3-6 pm**  
**Entry Check Out: Saturday, August 10th, 7-9 pm**  
**See General Rules on pages 28-29**

Premiums: 1<sup>st</sup> \$3, 2<sup>nd</sup> - \$2, 3<sup>rd</sup> - \$1  
Must have had test & band or no entry.

Water cups are provided, self waterer is encouraged.

1. Due to limited space, 4-H is given first priority. Call the Fair Office with questions, 208-267-7041.
2. Lots 5 and 6 pairs must match in color, age and breed.
3. **All poultry must be clean and parasite free. Poultry will be checked at registration and will not be entered if infested.**
4. No clipped wings.

**CHICKENS**

- CLASS A - SINGLE COMB CLEAN LEGGED
- CLASS B - ALL OTHER COMB CLEANED LEGGED
- CLASS C - FEATHERED LEGGED
- CLASS D - BANTAM-SINGLE COMB CLEANED LEGGED
- CLASS E - BANTAM-ALL OTHER COMB CLEAN LEGGED
- CLASS F - BANTAM-FEATHERLEG
- CLASS G - EXOTIC - If more than one variety, they are to be judged separately
- CLASS H - MISCELLANEOUS BREEDS

**Use Lots below for CLASSES A - H**

- LOT 1 - Cock
- LOT 2 - Cockerel
- LOT 3 - Hen
- LOT 4 - Pullet
- LOT 5 - Pairs, old
- LOT 6 - Pairs, young
- LOT 7 - Old trio, 1 cock and 2 hens
- LOT 8 - Young trio, 1 cockerel and 2 pullets
- LOT 9 - Female with offspring

- CLASS I - DUCKS
- CLASS J - GAME BIRDS
- CLASS K - GEESE
- CLASS L - GUINEAS
- CLASS M - PIGEONS
- CLASS N - PHEASANTS
- CLASS O - TURKEYS

**Use Lots below for CLASSES I - O**

- LOT 1 - Male, over 1 year
- LOT 2 - Female, over 1 year
- LOT 3 - Male, under 1 year
- LOT 4 - Female, under 1 year
- LOT 5 - Pairs, old
- LOT 6 - Pairs, young
- LOT 7 - Female with offspring

# OPEN CLASS ANIMALS

## DEPARTMENT F RABBITS

Superintendents: Rebecca Hegge (208) 304-8022

**Entry Check In: Monday, August 5th, 3-6 pm**  
**Entry Check Out: Saturday, August 10th, 7-9pm**  
**See General Rules on pages 28-29**

Premiums: 1<sup>st</sup> - \$3, 2<sup>nd</sup> - \$2, 3<sup>rd</sup> - \$1

CLASS A - CROSSBREED  
CLASS B - ANY OTHER PUREBRED  
CLASS C - CHAMPAGN d' ARGENT  
CLASS D - DUTCH  
CLASS E - HOLLAND LOP  
CLASS F - ALL OTHER LOPS  
CLASS G - NETHERLAND DWARF  
CLASS H - REX  
CLASS I - MINI REX  
CLASS J - SILVER FOX

CLASS K - MEAT PEN—Three of any large breed, 3-5 lbs and 42 – 69 days old. Must be from same litter.

Classes will be made by breed with four or more entries in that breed and will be announced at the Fair. Breeds with less than four entries will be classed together as “Any Other Purebred.”

LOT 1 - Senior Buck (over 6 months)  
LOT 2 - Intermediate Buck ( Large Breed 6-8 months)  
LOT 3- Junior Buck (under 6 months)  
LOT 4- Senior Doe (over 6 months)  
LOT 5– Intermediate Doe (Large Breed 6-8 months)  
LOT 6 - Junior Doe (under 6 months)  
LOT 7 - Doe with litter

SUBLOT A - FUR—for any class above

1. Entries must include ear number, division, class and lot for each entry. Contact the Superintendent with any questions about class designation for entries. Due to limited space, 4-H is given first priority.
2. All rabbits must be identified by a permanent tattoo, or identification written clearly in permanent marker, in the left ear. Freshly tattooed rabbits must have the excess ink removed before judging. Rabbits with illegible tattoos or marks may be eliminated at the discretion of the judge.



**Gentle Shepherd Farm**

Purebred Texel Sheep

Crossbred Texel / Hamp

Processed Cornish-Cross

Fryer Chickens

Tammy Hedrick

Bonnars Ferry, ID

GentleShepherdFarms@gmail.com

(208)-610-0154



## DEPARTMENT G SHEEP

Superintendents: Tammy Hedrick 208 610-0154  
Shelby Cowley 208 304-8974

**Entry Check In: Monday, August 5th, 3-6 pm**  
**Entry Check Out: Saturday, August 10th, 7-9 pm**  
**See General Rules on pages 28-29**

Premiums: 1<sup>st</sup> - \$5, 2<sup>nd</sup> - \$3, 3<sup>rd</sup> - \$2

CLASS A - BLACK SHEEP  
CLASS B - CROSSBREDS  
CLASS C - OTHER PUREBREDS  
CLASS D - SUFFOLK  
CLASS E - WOOL BREEDS

LOT 1 - Ram Lamb, under 1 year  
LOT 2 - Ram Yearling, 13 to 24 months  
LOT 3 - Ram, 2 years and over  
LOT 4 - Ewe Lamb, under 1 year  
LOT 5 - Ewe Yearling, 13 to 24 months  
LOT 6 - Ewe, 2 years and over  
LOT 7 - Market Lambs, not for auction

## DEPARTMENT H SWINE

Superintendent: Briana Lo Porto 208-946-1592

Entry Check In: Monday, August 5th 3-6 pm  
Entry Check Out: Saturday, August 10th, 7-9 pm  
See General Rules on pages 28-29

Premiums: 1<sup>st</sup> - \$5, 2<sup>nd</sup> - \$3, 3<sup>rd</sup> - \$2

CLASS A - CHESTER WHITE  
CLASS B - CROSSBREEDS  
CLASS C - DUROC  
CLASS D - HAMPSHIRE  
CLASS E - LANDRACE  
CLASS F - MARKET BARROW - all breeds  
CLASS G - YORKSHIRE

LOT 1 - Boar, 1 year or over  
LOT 2 - Boar, under 1 year  
LOT 3 - Sow, 1 year or over  
LOT 4 - Sow, under 1 year  
LOT 5 - Best Sow and Litter  
Not less than 8 pigs under 8 weeks



6355 Main St.  
Bonners Ferry, ID 83805  
(208) 267-2507  
8am-9pm Every Day!

*Bonners Ferry*

**SHOP Local.**  
**Save MORE.**

### We Are Local



- We are your neighbors!
- Each store is run by independent owner-operators.
- We live locally, hire locally, and give back to local organizations.

### Shopping Tips

1. Shop us first, save more!
2. Stock up! Many of our bargains are one-time deals.
3. Stop by often to see what's new.



✦ BOUNDARY COUNTY FAIR PRESENTS ✦

**CLASSIC**

**MECHANICAL BULL**

SATURDAY 10 AUGUST

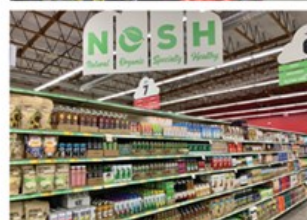
5<sup>s</sup> RIDES

**BOUNDARY COUNTY FAIR**

BOUNDARY COUNTY FAIRGROUNDS | BLACK TOP | BONNERS FERRY, IDAHO

9 A.M. TO 11 A.M. \$15/THREE RIDES OR \$5/RIDE  
7 P.M. TO 9 P.M. \$5 FOR PER RIDE

LIVE MUSIC • BEER GARDEN • FUN FOR ALL



## DEPARTMENT J ART

Superintendent: Barb LePordevin 208.267.2842

**Entry Check In: Monday, August 5th, 4-7 pm  
and Tuesday, August 6th, 7-11:30 am**

**Entry Check Out: Sunday, August 11th, 9-11 am  
See General Rules on pages 28-29**

Premiums: 1<sup>st</sup> - \$3, 2<sup>nd</sup> - \$2, 3<sup>rd</sup> - \$1

1. **All art must be ready to hang, whether framed, matted, or mounted on cardstock. Framed, heavy artwork must be properly equipped to hang using wire and hooks (no string and tape hooks). This applies to all divisions. No exceptions.**

2. **Original work only**

3. One entry to each class/lot.

4. Artists must have their names covered for judging.

**Art Department will have new guidelines for entries:**

1. All art work not framed needs to be mounted to card stock, construction paper or matte boards with at least 1" of border around artwork.

2. Ages 6 Years and under, 7-9 Years and 10-12 Years cannot be framed. Due to the type of hanging ability we have, we can only accept these age groups mounted on card stock, construction paper or matte board. This does not apply to the older divisions.

3. All art work needs to be properly ready to hang. No exceptions. Please do not use string and tape or tape hooks. Your hanging needs to last through wind, heat, and time.

4. Any art work entered and not properly ready to hang will be excluded from judging. No exceptions. This applies to all divisions.

5. Framed art work or canvas artwork must be ready to hang with wire and not sawtooth hangers or metal hooks.

6. Any art work that is brought in and not meeting the guidelines, will be turned away, until it's properly ready to hang.

DIVISION A - 6 YEARS & UNDER

DIVISION B - 7—9 YEARS

DIVISION C - 10—12 YEARS

DIVISION D - 13—17 YEARS

DIVISION E - ADULTS 18—64 YEARS

DIVISION F - SENIORS 65 YEARS & OVER

DIVISION G - SPECIAL

DIVISION H - PROFESSIONAL

DIVISION I - EXPERIENCED ARTIST-Those who have painted 5 years or more.

DIVISION J - NON-RESIDENT

CLASS A - ACRYLIC

CLASS B - CHARCOAL, PENCIL, PEN & INK

CLASS C - CRAYON/MARKERS

CLASS D - OIL PAINT/PASTEL

CLASS E - PASTEL CHALK

CLASS F - WATERCOLOR

CLASS G - WATERCOLOR PENCIL/COLORED PENCIL

CLASS H - MISCELLANEOUS/MIXED MEDIA

USE LOTS BELOW FOR CLASSES A - J

LOT 1 - Abstract

LOT 2 - Animal, Wildlife, Birds

LOT 3 - Architecture, Building, Structure

LOT 4 - Cartoon, Fantasy, Steam Punk

LOT 5 - Floral, Still Life

LOT 6 - Landscape, Seascape

LOT 7 - Portrait

LOT 8 - Transportation

LOT 9 - Miscellaneous



**Boundary County Farm Bureau**

*Educating, Strengthening  
Promoting, Protecting  
Advocating for Agriculture  
and Property Rights*

**Proudly Supporting 4-H & FFA**

Purebred  
**Texel Sheep**

Shelby Cowley  
208.304.8974  
Bonners Ferry, Id 83805  
shelbycowley@hotmail.com

## DEPARTMENT K BAKED GOODS

Superintendent: Natalie Feuerstein 208 304-8772

**Entry Check In: Monday, August 5th, 4-7 pm  
and Tuesday, August 6th, 7-11:30 am**

**Entry Check Out: Sunday, August 11th, 9-11 am  
See General Rules on pages 28-29**

Premiums: 1<sup>st</sup> - \$3, 2<sup>nd</sup> - \$2, 3<sup>rd</sup> - \$1

DIVISION A - 6 yrs & Under

DIVISION B - 7-9 yrs

DIVISION C - 10-12 yrs

DIVISION D - 13-17 yrs

DIVISION E - ADULTS 18-64 yrs

DIVISION F - SENIORS 65 & older

DIVISION G - SPECIAL

DIVISION H - PROFESSIONAL

**No mini loaves or mini muffins. All cakes must be real. All  
entries must be on a disposable board, pan or plate.**

**All entries, except decorated cakes, are judged on appearance, texture and flavor.**

### Use sublots below for Classes A - Q

SUBLOT I - Gluten Free

SUBLOT II - Special Diet

#### CLASS A - YEAST BREAD

LOT 1 - White

LOT 2 - Whole Wheat

LOT 3 - Rye

LOT 4 - French

LOT 5 - Home Ground Wheat

LOT 6 - Other

#### CLASS B - YEAST ROLLS (plate of 4)

LOT 1 - Plain

LOT 2 - Fancy

LOT 3 - Whole Wheat-plain

LOT 4 - Sweet

LOT 5 - Other

#### CLASS C - MACHINE MADE BREAD - No box mixes

LOT 1 - White

LOT 2 - Whole Wheat

LOT 3 - Rye

LOT 4 - French

LOT 5 - Batter

LOT 6 - Other

#### CLASS D - SOURDOUGH

LOT 1 - Bread

LOT 2 - Rolls (plate or 4)

#### CLASS E - MUFFINS - No mini muffins (plate of 4)

LOT 1 - Fruit

LOT 2 - Other

#### CLASS F - BISCUITS/SCONES (plate of 4)

LOT 1 - Rolled

LOT 2 - Dropped

CLASS G - QUICK BREADS - No mini loaves  
Judged on general appearance, size, uniform shape, crust,  
crumb, grain, lightness, tenderness and flavor

LOT 1 - Banana

LOT 2 - Coffee Cake

LOT 3 - Nut

LOT 4 - Zucchini

LOT 5 - Sweet Rolls

LOT 6 - Other

#### CLASS H - BUTTER CAKES - Frosted

LOT 1 - White

LOT 2 - Yellow

LOT 3 - Spice

LOT 4 - Other

#### CLASS I - BUTTERLESS CAKES

LOT 1 - Angel

LOT 2 - Sponge

LOT 3 - Chiffon

#### CLASS J - OTHER CAKES

LOT 1 - Fruit

LOT 2 - Other

CLASS K - I STARTED WITH A MIX - Must include recipe  
with mix used

LOT 1 - White

LOT 2 - Yellow

LOT 3 - Spice

LOT 4 - Chocolate

#### CLASS L - BROWNIES (plate of 4)

#### CLASS M - CUPCAKES (plate of 4)

#### CLASS N - DOUGHNUTS (plate of 4)

Judged by: Appearance, texture, and flavor

LOT 1 - Yeast

LOT 2 - Cake

#### CLASS O - PIES (NO CREAM, NO MERINGUE PIES)

Judged on appearance, flaky crust, texture, and flavor

Not responsible for return of pan

LOT 1 - One Crust

LOT 2 - Two Crust

#### CLASS P - COOKIES (plate of 4)

Judged on general appearance, uniform shape, delicate brown  
texture and flavor

#### CLASS Q - CRISPS/CRACKERS (plate of 4)

#### CLASS R - CANDY (4 pieces)

LOT 1 - Fudge, Old fashioned

LOT 2 - Fudge, Quick

LOT 3 - Divinity

LOT 4 - Peanut Brittle

LOT 5 - Caramel

LOT 6 - Other

#### CLASS S - DECORATED CAKES

**All cakes to be real. Judged separately from other baked  
goods. Judged on appearance and not taste. All cakes  
must be on a disposable, hard surfaced board or pan no  
wider than 12 inches and no higher than 10 1/2 inches to fit  
the display case.**

LOT 1 - Theme

LOT 2 - Holiday

LOT 3 - Toy

LOT 4 - Wedding

LOT 5 - Other Decorated Cakes

# BAKED GOODS AUCTION

**Auction: During Opening Ceremonies  
Tuesday, August 6th at 6:30 pm**

All Baked Goods entries winning Best of Class will be auctioned off to the highest bidder during Opening Ceremonies Baked Goods Auction. A photo of the winning entries will be left in the Exhibit Hall for display.  
**2023 AUCTION brought in \$1305.00**  
These funds helped to add two new 240 electrical panels to the arena fence.  
Thank you for your donations for the auction!

## DEPARTMENT L CONSTRUCTS

**Superintendent: Theresa Carmine 208 597-4422**

**Entry Check In: Monday, August 5th, 4-7 pm  
and Tuesday, August 6th, 7-11:30 am**

**Entry Check Out: Sunday, August 11th, 9-11 am  
See General Rules on pages 28-29**

Premiums: 1st - \$3, 2nd - \$2, 3rd - \$1

DIVISION A - 6 yrs & Under  
DIVISION B - 7-9 yrs  
DIVISION C - 10-12 yrs  
DIVISION D - 13-17 yrs  
DIVISION E - ADULTS 18-64 yrs  
DIVISION F - SENIORS 65 & over  
DIVISION G - SPECIAL  
DIVISION H - PROFESSIONAL

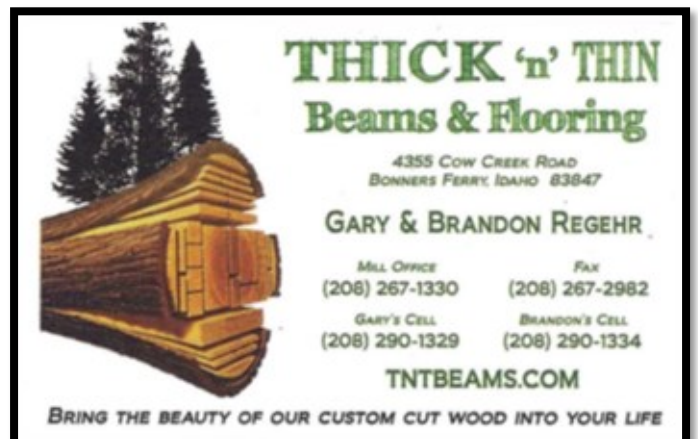
**ALL displays MUST be entered on a hard portable surface. Entries cannot exceed 12" wide x 18" long due to display restrictions.**

**LEGOS AND DUPLOS PIECES SHOULD NOT BE MIXED IN ONE ENTRY, PLEASE KEEP SEPARATE ENTRIES FOR EACH**

**Subdivisions: 1) Kit  
2) Original**

CLASS A - LEGOS  
LOT 1 - Still  
LOT 2 - Motorized  
LOT 3 - In a setting  
LOT 4 - Lighted Display  
CLASS B - DUPLOS  
LOT 1 - Still  
LOT 2 - Motorized  
LOT 3 - In a setting  
LOT 11 - Other

CLASS C - K-NEX  
LOT 1 - Still  
LOT 2 - Motorized  
LOT 3 - In a setting  
CLASS D - ERECTOR  
LOT 1 - Still  
LOT 2 - Motorized  
LOT 3 - In a setting  
CLASS E - TECHNIQUES  
LOT 1 - Still  
LOT 2 - Motorized  
LOT 3 - In a setting  
CLASS F - MODELS  
a) still b) motorized  
LOT 1 - Model boats  
LOT 2 - Model cars  
LOT 3 - Snap tight cars  
LOT 4 - Model planes  
LOT 5 - Model trucks  
LOT 6 - Snap tight trucks  
LOT 7 - Models in a setting  
LOT 8 - Motorcycles  
LOT 9 - Rockets  
LOT 10 - Trains  
LOT 11 - Other  
CLASS G - CONSTRUCTS  
CLASS H - OTHER





## DEPARTMENT M CRAFTS & HOBBIES

Superintendent: Shelli Cowell 425-563-8161

**Entry Check In: Monday, August 5th, 4 -7 pm  
and Tuesday, August 6th, 7-11:30 am**

**Entry Check Out: Sunday, August 11th, 9-11 am  
See General Rules on pages 28-29**

Premiums: 1<sup>st</sup> - \$3, 2<sup>nd</sup> - \$2, 3<sup>rd</sup> - \$1

DIVISION A - 6 yrs & Under  
DIVISION B - 7-9 yrs  
DIVISION C - 10-12 yrs  
DIVISION D - 13-17 yrs  
DIVISION E - ADULTS 18-64 yrs  
DIVISION F - SENIORS 65 & over  
DIVISION G - SPECIAL  
DIVISION H - PROFESSIONAL

**Crafts must have been made within the last year.**

**Subdivisions: 1) Kit or plans  
2) Original**

### CLASS A - BEADWORK AND JEWELRY

LOT 1 - Freeform beadwork  
LOT 2 - Loom beadwork  
LOT 3 - Surface beadwork  
LOT 4 - Wirework  
LOT 5 - Earrings  
LOT 6 - Necklaces  
LOT 7 - Bracelets  
LOT 8 - Sets  
LOT 9 - Other

### CLASS B - CERAMICS

LOT 1 - Stains  
LOT 2 - Underglazed  
LOT 3 - Glazed  
LOT 4 - Overglazed  
LOT 5 - Porcelain  
LOT 6 - Stoneware  
LOT 7 - Other

### CLASS C - POTTERY

**Use the following sublots for Class C**

a) Coiled  
b) Slab  
c) Molded  
d) Pinched  
e) Wheel thrown  
f) Combination

LOT 1 - Glazed  
LOT 2 - Unglazed

### CLASS D - CLAY - Oven bake or air dry

LOT 1 - Dough sculpture  
LOT 2 - Oven bake sculpture  
LOT 3 - Air dry sculpture  
LOT 4 - Paper mache'  
LOT 5 - Plaster craft  
LOT 6 - Other

### CLASS E - DECORATIVE PAINTING

LOT 1 - Painted on wood  
LOT 2 - Painted on metal  
LOT 3 - Painted on recycled item  
LOT 4 - Painted on natural item  
LOT 5 - Other

### CLASS F - DOLLS AND TOYS

LOT 1 - Porcelain  
LOT 2 - Composition  
LOT 3 - Soft sculpture  
LOT 4 - Stuffed  
LOT 5 - Doll clothes  
LOT 6 - Other

### CLASS G - GLASS

LOT 1 - Etched glass  
LOT 2 - Painted glass  
LOT 3 - Stained glass  
LOT 4 - Fused glass  
LOT 5 - Other

### CLASS H - METAL

LOT 1 - Etched  
LOT 2 - Fabricated  
LOT 3 - Forged  
LOT 4 - Punched or embossed  
LOT 5 - Other

### CLASS I - MINIATURES

LOT 1 - Furniture  
LOT 2 - Accessories  
LOT 3 - Diorama  
LOT 4 - Dollhouse  
LOT 5 - Other

### CLASS J - CRAFTS FROM NATURE

LOT 1 - Antlers  
LOT 2 - Basketry  
LOT 3 - Dried arrangements  
LOT 4 - Pine needle art  
LOT 5 - Taxidermy  
LOT 6 - Tied flies  
LOT 7 - Other

### CLASS K - PAPER CRAFTS

LOT 1 - Embossing  
LOT 2 - Stamping  
LOT 3 - Memory books  
LOT 4 - Stationary  
LOT 5 - Other

### CLASS L - WOODWORKING

LOT 1 - Carving  
LOT 2 - Inlay  
LOT 3 - Lathe work  
LOT 4 - Scroll saw  
LOT 5 - Wood burning  
LOT 6 - Small constructions  
LOT 7 - Large constructions  
LOT 8 - Other



**DEPARTMENT M  
CRAFTS & HOBBIES**

**CLASS M - MISCELLANEOUS CRAFTS**

- LOT 1 - Candles
- LOT 2 - Collage
- LOT 3 - Collections
- LOT 4 - Leatherwork
- LOT 5 - Macramé
- LOT 6 - Plastic canvas
- LOT 7 - Recycled crafts - **List the initial recycled item used**
- LOT 8 - Artificial flower arrangements
- LOT 9 - Woven
- LOT 10 - Wooden craft sticks
- LOT 11 - Holiday
- LOT 12 - Other

**CLASS N - SOAP - 3 bars or one jar**

- LOT 1 - Chips



**JANZEN  
CONSTRUCTION LLC**  
**208-304-8031**

NEW CONSTRUCTION • GENERAL CONTRACTING • REMODEL • NEW CONSTRUCTION • REMODEL • GENERAL CONTRACTING

Serving the Panhandle Northwest!



## DEPARTMENT N FLOWERS

**Superintendent: Tess Wagner 208 561-1893  
Leilani Cummings 208 582-4867**

**Entry Check In: Monday, August 5th, 4-7 pm  
and Tuesday, August 6th, 7-11:30 am  
Entry Check Out: Sunday, August 11th, 9-11 am  
See General Rules on pages 28-29**

Premiums: 1<sup>st</sup> - \$3, 2<sup>nd</sup> - \$2, 3<sup>rd</sup> - \$1

DIVISION A - 6 yrs & Under  
DIVISION B - 7-9 yrs  
DIVISION C - 10-12 yrs  
DIVISION D - 13-17yrs  
DIVISION E - ADULTS 18-64 yrs  
DIVISION F - SENIOR 65 & over  
DIVISION G - SPECIAL  
DIVISION H - PROFESSIONAL

**SPECIMEN EXHIBITS - 3 Stems unless otherwise noted and must be grown by exhibitor. Limit Two Entries Per Lot**

1. Please use a clear glass container for specimen exhibits; the Fair will furnish containers if needed.
2. Flowers will be entered outside the Exhibit Hall on facilities furnished.
3. All foliage under the water line needs to be removed; **please cut stems long.**
4. Accessories not permitted except in certain arrangement categories (Class A, Lot 1-3,10-11)
5. No plastic, feather or silk flowers permitted.
6. Flowers and plants in **ALL** classes are to be grown by the **exhibitor**, except **IN PROFESSIONAL DIVISION ONLY.**
7. Give the name of the flower(s) exhibited.
8. **If your specimen wilts/dries, you are encouraged to replace it after judging.** All dead flowers & insect infested, the flowers will be removed by a Superintendent.
9. Juniors (17 and under) and Seniors (65 years and over) may enter in one division only and need to mark their tags accordingly.
10. **PROFESSIONAL ONLY CLASS A** does not have to be grown by exhibitor.

### CLASS A - ARRANGEMENTS

- LOT 1 - Fair Theme
- LOT 2 - Harvest Theme - Using fruit, grain, vegetables & flowers, **MUST HAVE** all 4.
- LOT 3 - Theme
  - a) Birthdays
  - b) Weddings
  - c) Holiday
  - d) Recycled container
  - e) Other
- LOT 4 - Centerpiece
  - a) Formal
  - b) Informal garden bouquet
- LOT 5 - Color Harmony: flowers all one color
- LOT 6 - Corsage/Boutonniere
- LOT 7 - Dried Arrangement
- LOT 8 - Floating Flowers
- LOT 9 - Miniatures
  - a) Under 3"
  - b) 3" - 5"
- LOT 10 - One Flower Arrangement - outside accessories that develop a form or a line, and must show a focal point line
- LOT 11 - Oriental
- LOT 12 - Terrarium
- LOT 13 - Wild Crafted- Fresh/Dried
- LOT 14- Other

### CLASS B1 - AMARANTHUS

### CLASS B2 - ASTERS

- LOT 1 - Annual
  - a) Double
  - b) Single
  - c) Spider/Quilled
  - d) Mixed
- LOT 2 - Perennial
- CLASS B3 - BEGONIAS - All lots, single stem; must be exhibited with leaf attached.
  - LOT 1 - Fibrous
    - a) Wax - Bedding plant, small flower singles
    - b) Angle Wing
  - LOT 2 - Tuberous
    - a) Upright
    - b) Hanging
  - LOT 3 - Rhizomatous

### CLASS B4 - CALLA

- LOT 1 - Single stem
- LOT 2 - Mixed colors
- CLASS B5 - CALENDULA
- CLASS B6 - CAMPANULA
  - LOT 1 - Canterbury Bells
  - LOT 2 - Other

### CLASS B7 - CANA

- CLASS B8 - CENTAUREAS
  - LOT 1 - Bachelor Buttons
  - LOT 2 - Other

### CLASS B9 - CHRYSANTHEMUM

- LOT 1 - Cushion Mums
- LOT 2 - Tall mums
- LOT 3 - Large flowered - Football type
- LOT 4 - Mum collection, (5 varieties/5 stems)
- LOT 5 - Painted Daisy
- LOT 6 - Shasta Daisy
- LOT 7 - Other

### CLASS B10 - CONE FLOWER

- CLASS B11 - COREOPSIS
  - LOT 1 - Annual



- CLASS B12 - COSMOS (All 3 sprays with buds)  
 LOT 1 - Cosmos, common  
 LOT 2 - Cosmos, yellow/orange  
 LOT 3 - Cosmos, mixed  
 LOT 4 - Other
- CLASS B13 - DAHLIAS (All single stem)  
 LOT 1 - Anemone - One or more rows of ray florets around a center of elongated disc florets  
 LOT 2 - Ball, 2" and up  
 LOT 3- Cactus  
 a) Incurved  
 b) Semi-cactus  
 c) Straight  
 LOT 4 - Collarette - Open centered with single row of petals, small petaloid around central disk  
 LOT 5- Dinner Plate - All types over 8"  
 LOT 6 - Fimbriated or Laciniate  
 LOT 7 - Formal Decorative - Flat petals uniform and regularly arranged tending to curve toward stem  
 a) Under 4"  
 b) 4" - 6"  
 c) 6" - 8"  
 LOT 8 - Informal Decorative - Petals twisted, curled or wavy, arranged irregularly  
 a) under 4"  
 b) 4" - 6"  
 c) 6" - 8"  
 LOT 9 - Pom Pom, Under 2 inches  
 LOT 10 - Semi-double (Peony)  
 LOT 11 - Single  
 LOT 12 - Water lily  
 LOT 13 - Collection (5 Stems)  
 a) One Color  
 b) Mixed Colors  
 LOT 14 - Other
- CLASS B14 - DAYLILY (3+ stems)  
 LOT 1 - Same color  
 LOT 2 - Mixed colors
- CLASS B15 - DELPHINIUM
- CLASS B16 - DIANTHUS  
 LOT 1 - Carnation  
 LOT 2 - Pinks, annual  
 LOT 3 - Pinks, perennial  
 LOT 4 - Sweet William
- CLASS B17 - EVERLASTING (3 sprays/stems)  
 LOT 1 - Baby's Breath  
 a) Annual  
 b) Perennial  
 LOT 2 - Bells of Ireland  
 LOT 3 - Globe Thistle  
 LOT 4 - Gomphrena  
 LOT 5 - Ornamental grass  
 LOT 6 - Statice  
 a) Annual  
 b) German  
 c) Sea Lavender  
 LOT 7 - Strawflowers  
 LOT 8 - Other
- CLASS B18 - GAILLARDIA
- CLASS B19 - GERANIUM (PELARGONIUM)  
 LOT 1 - Ivy  
 LOT 2 - Upright
- CLASS B20 - GERANIUM (HARDY PERENNIAL)
- CLASS B21 - GLADIOLA ( 1 Spike, 3 open blossoms min)  
 LOT 1 - Butterfly Miniature  
 LOT 2 - Large flowered  
 LOT 3 - Perennial - Hardy dwarf/orchid gladiola  
 LOT 4 - Collection (3 spikes of one color)  
 LOT 5 - Collection (5 different colors)
- CLASS B22- HOLLYHOCK (1 stem, 3 blooms minimum)  
 LOT 1 - Single  
 LOT 2 - Double
- CLASS B23 - HYDRANGEA  
 LOT 1 - Any color (1 bloom)
- CLASS B24 - LARKSPUR  
 LOT 1 - One color
- CLASS B25 - LILY (1 Stem)  
 LOT 1 - Asiatic  
 LOT 2 - Oriental  
 LOT 3 - Tiger  
 LOT 4 - Trumpet
- CLASS B26 - MARIGOLD - Minimum 3" Stem  
 LOT 1 - Double large  
 LOT 2 - Double dwarf  
 LOT 3 - French  
 LOT 4 - Single  
 LOT 5 - Signet/fern leaf  
 LOT 6 - Spray
- CLASS B27 - NASTURTIUM (5 stems)  
 LOT 1 - One color with foliage  
 LOT 2 - Mixed colors with foliage
- CLASS B28 - PANSY (5 blooms-long stems please)  
 LOT 1 - Pansy  
 a) One color  
 b) Mixed color  
 LOT 2 - Viola  
 a) One color  
 b) Mixed colors
- CLASS B29- PETUNIA (3 sprays 1 color)  
 LOT 1 - Single  
 LOT 2 - Double  
 LOT 3 - Mixed colors (3+ sprays)
- CLASS B30 - PHLOX, (Single stem)  
 LOT 1 - Annual  
 LOT 2 - Perennial
- CLASS B31 - \*ROSE  
*(1/4 to 1/2 open, NOT FULL) All with foliage on; single stems unless otherwise noted; a spray is one stem with 3 or more blooms.*  
 LOT 1 - Antique/Old Garden  
 LOT 2 - Climbing (1 spray)  
 LOT 3 - Floribunda - Over 2", (1 spray)  
 LOT 4 - Grandiflora  
 LOT 5 - Hybrid Tea  
 LOT 6 - Miniature (1 spray)  
 LOT 7 - Polyantha - Under 2", (1 spray)  
 LOT 8 - Shrub Rose  
 a) English  
 b) Hardy shrub (Rugosas, Explorers, Meidilands, etc)  
 LOT 9 - Collection, mixed colors (5+ stems)
- CLASS B32- RUDBECKIA/GLORIOSA DAISY  
 LOT 1 - Annual  
 LOT 2 - Perennial  
 LOT 3- Collection (5 stems)  
 LOT 4 - Mixed Colors

CLASS B33 - SALVIA

- LOT 1 - Annual
- LOT 2 - Perennial

CLASS B34 - SCABIOSA

- LOT 1 - Annual
- LOT 2 - Perennial

CLASS B35- SNAPDRAGONS

- LOT 1 - Butterfly
- LOT 2 - Dwarf
- LOT 3 - Tall, Old-fashioned
- LOT 4 - Mixed (5 stems)

CLASS B36 - STOCK

CLASS B37 - SUNFLOWERS (3 flowers), remove excess unopened buds

- LOT 1 - Under 4"
- LOT 2 - 4" - to 6"
- LOT 3 - 6" - to 10"
- LOT 4 - Over 10"
- LOT 5 - Mixed (3+ stems)
- LOT 6 - Perennial

CLASS B38 - SWEET PEA

- LOT 1 - One color (5 stems)
- LOT 2 - Mixed colors (5 stems)

CLASS B39 - VINES - All lots (1 spray or 3 blooms)

- LOT 1 - Annual
  - a) Morning Glory
  - b) Runner Bean
  - c) Other
- LOT 2 - Perennial
  - a) Clematis
  - b) Honeysuckle
  - c) Trumpet Vine
  - d) Other

CLASS B40 - ZINNIA (3 blooms 1 color)

- LOT 1 - 2" and under
- LOT 2 - 2"- 4"
- LOT 3 - over 4"
- LOT 4 - Mixed colors (5 + stems)

CLASS B41 MISCELLANEOUS/NEW

CLASS C - HOUSEPLANTS

- LOT 1 - African Violets
- LOT 2 - Begonias
- LOT 3 - Cactus/succulent
- LOT 4 - Ferns
- LOT 5 - Flowering -In bloom (Please Identify)
- LOT 6 - Foliage
  - a) Trailing
  - b) Upright
- LOT 7 - Dish Garden (5 different plants)
- LOT 8 - Other - PLEASE IDENTIFY

CLASS D - OUTDOOR POTTED PLANTS

- LOT 1- Single Pot Plant
- LOT 2 - Two Plant Pot
- LOT 3 - Combination Pot (3+ different plants)
- LOT 4 - Themed Fairy Garden
- LOT 5 - Outdoor Hanging Basket
- LOT 6 - Perennial
- LOT 7- Tree or Shrub
  - a) Blooming
- LOT 6- Other (Please Identify)
  - b) Fruiting
  - c) Non-blooming

LOT 5 - Single Pot

CLASS E - MOST UNUSUAL SPECIMEN



*Located in pristine  
Naples, Idaho*

Bringing hearts together since 2007, The Great Northwest Territories was built on a dream to bring North Idaho a wedding and event venue like none other.

- *Weddings*
- *Corporate events*
- *Anniversaries*
- *Beautiful modern facility*
- *Family operated*
- *Mountain setting*

(208) 946-0222 | 998 Mountain Meadows Rd, Naples, Idaho | [greatnwtterritories.com](http://greatnwtterritories.com) | [brenda.liermann@live.com](mailto:brenda.liermann@live.com)

## DEPARTMENT O FRUITS and NUTS

Superintendent: Angie Schnuerle 208 597-6307

**Entry Check In: Monday, August 5th, 4-7 pm  
and Tuesday, August 6th, 7-11:30 am**

**Entry Check Out: Sunday, August 11th, 9-11 am  
See General Rules on pages 28-29**

Premium: 1st - \$3, 2nd -\$2, 3rd - \$1

DIVISION A - JUNIOR DIVISION

DIVISION B - ADULT 18-64 yrs

DIVISION C - SENIORS 65 & over

DIVISION D - SPECIAL

DIVISION E - PROFESSIONAL

1. The Fair will furnish flats and plates where called for.
2. **Select only fruits and nuts that are uniform in shape and size and free from blemishes. Wash, but do not scrub.**
3. **All class lots to have stems remaining on exhibit unless noted otherwise.**
4. All entries must be grown and prepared for entry by the exhibitor.
5. Variety, if known, should be listed on the entry tag.

CLASS A - APPLES (Plate of 5, except crab)

LOT 1 - Crabapple (Plate Of 10)

LOT 2 - Delicious, Golden

LOT 3 - Delicious, Red

LOT 4 - Jonathan

LOT 5 - Macintosh

LOT 6 - Rome

LOT 7 - Wealthy

LOT 8 - Yellow Transparent

LOT 9 - Lodi

LOT 10 - Other

CLASS B - APRICOTS (Plate of 5)

CLASS C - BERRIES

LOT 1 - Blackberries, 10

LOT 2 - Raspberries, 10

a) Red

b) White

LOT 3 - Strawberries, 10

LOT 4 - Huckleberries, 10

LOT 5 - Blueberries, 10

LOT 6 - Other, 10

CLASS D - GRAPES (1 bunch)

CLASS E - PEACHES (Plate of 5, no stems)

CLASS F - PEARS (Plate of 5)

LOT 1 - Bartlett

LOT 2 - Other

CLASS G - PLUMS/PRUNES (Plate of 5)

LOT 1 - Plum

LOT 2 - Prunes, Italian

LOT 3 - Prunes, Petite

LOT 4 - Other

CLASS H - MELONS

LOT 1 - Cantaloupe

LOT 2 - Honeydew

LOT 3 - Watermelon - Stem not to exceed 2"

LOT 4 - Other

CLASS I - TOMATOES (Plate of 3)

LOT 1 - Red, Cherry

LOT 2 - Red, Beefsteak

LOT 3 - Red, Plum/paste

LOT 4 - Red, Other

LOT 5 - Green, Beefsteak

LOT 7 - Green Plum/paste

LOT 8 - Yellow

LOT 9 - Grape

LOT 10 - Other

LOT 11 - Orange, Cherry

LOT 12 - Tomatillo

CLASS J - NECTARINE (Plate of 5)

CLASS K - LARGEST FRUIT

CLASS L - SEEDS

LOT 1 - Sunflower (1 head 6" stem)

LOT 2 - Sunflower (1 pint, dried)

LOT 3 - Pumpkin (1 pint, dried)

CLASS M - NUTS

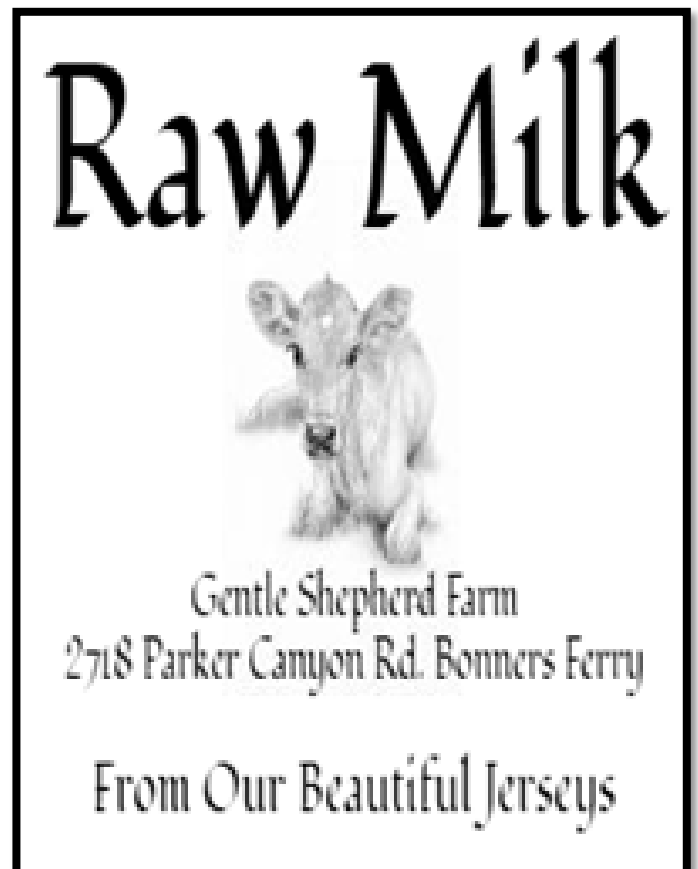
LOT 1 - Any fresh variety, (one pint, husks on)

LOT 2 - Any dry variety, including a sample of nut meat from at least three nuts (hulled) in exhibit


a) filberts

b) walnuts

CLASS N - OTHER



Raw Milk



Gentle Shepherd Farm  
2718 Parker Canyon Rd. Bonners Ferry

From Our Beautiful Jerseys

# DEPARTMENT P FOOD PRESERVATION

Superintendents: Carolyn McNeill 208 267-1997

**Entry Check In: Monday, August 5th, 4-7 pm  
and Tuesday, August 6th, 7-11:30 am**  
**Entry Check Out: Sunday, August 11th, 9-11 am**  
**See General Rules on pages 28-29**

Premiums: 1st - \$3, 2nd - \$2, 3rd - \$1

DIVISION A - JUNIOR DIVISION  
DIVISION B - ADULT 18-64 yrs  
DIVISION C - SENIORS 65 & over  
DIVISION D - SPECIAL  
DIVISION E - PROFESSIONAL

**All entries will be judged for:**

*Appearance	*Head Space
*Processing - hot water/pressure	*Rust on lid or ring
*Time allowance for altitude	*Recipe

**SEE FOOD PRESERVATION RULES FOR DETAILS pg 59**

## CLASS A - FRUITS

LOT 1 - Apricots  
LOT 2 - Applesauce  
LOT 3 - Blueberries  
LOT 4 - Cherries, Pie  
LOT 5 - Cherries, Sweet  
LOT 6 - Huckleberries  
LOT 7 - Peaches  
LOT 8 - Pears  
LOT 9 - Raspberries  
LOT 10 - Tomatoes  
a) stewed

## CLASS B - JUICES

LOT 1 - Apple  
LOT 2 - Grape  
LOT 3 - Other

## CLASS C - PIE FILLING: INCLUDE RECIPE

(see page 57 for label example)

LOT 1 - Apple  
LOT 2 - Blueberry  
LOT 3 - Cherry  
LOT 4 - Other

## CLASS D - VEGETABLE

LOT 1 - Beans  
a) whole  
b) cut  
LOT 2 - Beets  
LOT 3 - Carrots  
LOT 4 - Corn  
LOT 5 - Peas  
LOT 6 - Other

## CLASS E - MEATS

LOT 1 - Chicken  
LOT 2 - Beef  
LOT 3 - Fish  
LOT 4 - Wild Game  
LOT 5 - Pork

## CLASS F - PICKLING: INCLUDE RECIPE

LOT 1 - Asparagus Pickles  
LOT 2 - Beet Pickles  
LOT 3 - Bread and Butter  
LOT 4 - Dilled Pickles  
a) Cucumbers  
b) Green Beans  
c) Mixed Vegetables  
d) Garlic  
1) whole  
2) cut

LOT 5 - Sweet Pickles

LOT 6 - Pickled Fruit

LOT 7 - Other

## CLASS G - SAUERKRAUT

## CLASS H - DRIED FRUIT; List any pre-treatment on label for all dehydrated foods

LOT 1 - Apricots  
LOT 2 - Apples  
LOT 3 - Pears  
LOT 4 - Raisins  
LOT 5 - Tomatoes  
LOT 6 - Cherries  
a) Bing  
b) Other  
LOT 7 - Other

## CLASS I - DRIED VEGETABLES

LOT 1 - Beans  
LOT 2 - Mushrooms  
LOT 3 - Potatoes  
a) Sliced  
b) Hashbrowns  
LOT 4 - Zucchini  
LOT 5 - Other

## CLASS J - DRIED HERBS - Must be edible

LOT 1 - Basil  
LOT 2 - Garlic  
LOT 3 - Oregano  
LOT 4 - Parsley  
LOT 5 - Other

## CLASS K - LEATHER

LOT 1 - Apple  
LOT 2 - Apricot

## CLASS L - JELLIES; INCLUDE RECIPE. Must be processed and sealed with a standard two piece lid.

LOT 1 - Apple  
LOT 2 - Apricot  
LOT 3 - Blackberry  
LOT 4 - Huckleberry  
LOT 5 - Grape  
LOT 6 - Raspberry  
LOT 7 - Mixed  
LOT 8 - Other

**DEPARTMENT P  
FOOD PRESERVATION (cont.)**

**CLASS M - JAMS INCLUDE RECIPE**

- LOT 1 - Apricot
- LOT 2 - Blackberry
- LOT 3 - Huckleberry
- LOT 4 - Peach
- LOT 5 - Raspberry
- LOT 6 - Strawberry
- LOT 7 - Cherry
- LOT 8 - Mixed
- LOT 9 - Freezer
  - a) Strawberry
  - b) Raspberry
  - c) Other
- LOT 10 - Conserves
- LOT 11 - Other

**CLASS N - FRUIT BUTTER**

**CLASS O - SYRUP - Only Berry**

- LOT 1 - Raspberry
- LOT 2 - Blueberry
- LOT 3 - Other

**CLASS P - SPECIAL DIETS INCLUDE RECIPE.**

- LOT 1 - Fruits
- LOT 2 - Jam
- LOT 3 - Jelly
- LOT 4 - Pickles
- LOT 5 - Vegetable

**CLASS Q - SOUPS**

- LOT 1 - Broth
- LOT 2 - Other

**CLASS R - CONDIMENTS AND SAUCES**

**INCLUDE RECIPE**

- LOT 1 - Salsa - frozen or canned
  - a) Tomato
  - b) Fruit
- LOT 2 - Relish
- LOT 3 - Catsup
- LOT 4 - Pesto
  - a) Tomato
  - b) Fruit
- LOT 5 - Sweet Toppings
- LOT 6 - BBQ
- LOT 7 - Chutney
- LOT 8 - Other

**CLASS S- FREEZE DRIED**

- LOT 1- Fruits
  - a) Apples
  - b) Berries
  - c) Other
- LOT 2- Vegetables
  - a) Beans
  - b) Broccoli
  - c) Mixed
  - d) Other
- LOT 3- Meats
- LOT 4- Dairy
- LOT 5- Other

**FOOD PRESERVATION RULES**

*To prevent disqualification, please follow rules carefully*

1. All canned foods must be processed in **standard clear glass, non-quilted canning jars** with self-sealing, two piece lids. Screw bands must be attached.
2. **All canning jars must be labeled with:**
  - A. Hot or raw pack
  - B. Type of processing (boiling water or pressure- if pressure, how many pounds and dial or weighted gauge).
  - C. Time of process with altitude adjustment for this area (1,000 - 3,000 feet).
3. Entries will not be opened for judging. **NOTE - freezer jams and freeze dried entries will be opened and then refrigerated**
4. Jars must have a vacuum seal. Jars will be exhibited with rings. Rings will be removed for judging and must not be old, dented or rusty. Jars should not be sticky or dirty on outside.
5. All canned foods will be judged on correct processing times, appearance of product, uniformity of size and shape, color, clearness of liquid, arrangement, selection of product and correct container. Must follow current USDA/PNW recommendations. Visit: [nchfp.uga.edu/publications/publications\\_usda.html](http://nchfp.uga.edu/publications/publications_usda.html) for USDA/PNW publications and updates.
6. All canning, except plain fruits and vegetables, must have Ingredients and amounts listed. Please attach label with string or rubber band. Do not put information on fair exhibit tag.
6. Appropriate head space requirements:
  - \*Fruits - 1/2 inch
  - \*Vegetables - 1/2-1 inch
  - \*Jams and Jellies - 1/4 inch
  - \*Pickles - 1/2 inch
  - \*Meats - 1-1 1/2 inches
8. The size of canning jar and product must meet USDA guidelines:
  - \*Fruits, vegetables - pint or quart (exception: corn only in a pint jar)
  - \*Juices - pint, quart or half gallon
  - \*Jams and Jellies - half pint or pint
  - \*Fish - Half pint or pint
  - \*Meat - pint or quart
  - \*Pickles - half pint, pint or quart
9. Dried fruits and vegetable (including mushrooms ) may be in plastic bags or jars with rings. List any pretreatment on label for all dehydrated products.
10. **THE FOLLOWING ENTRIES WILL BE DISQUALIFIED**
  - \*Foods processed and packed not following current USDA/ PNW recommendations
  - \*Paraffin sealed jams and jellies
  - \*Jars with zinc lids
  - \*Foods in green glass jars or non-standardized jars
  - \*Foods that have been improperly processed or packed jars with more than 2" head space
  - \*Jars with added bleach, sulfite or other preservatives (for example: baking soda may not be added to green vegetables and acids may not be added to non-pickled foods with exception of tomatoes and figs).
  - \*Not properly labeled





# SONIC



**We Have All Your FAST-FOOD FAVORITES!**

509785 Hwy 95, Bonners Ferry, ID 83805 • (208) 306-7007



## BONNERS FERRY



### GLASS & DOOR CO.

Glass & Glazing /  
Commercial & Residential  
Windows, Doors,  
Garage Doors /  
Lock Smithing  
(after hrs 208-267-8688)

### Auto Glass / All Types of Glass / Mirrors

6821 Main Street, P.O. Box 217, Bonners Ferry, ID 83805

**(208) 267-3195 or 1-800-842-0982**

Fax (208) 267-5142

**DEPARTMENT Q  
GARMENTS AND ACCESSORIES**

(Sewn, Knitted, Crocheted, Embellished, Woven and  
Other Handwork)

**Superintendents: Jordan Burt 360-780-0703**

**Entry Check In: Monday, August 5th, 4-7 pm  
and Tuesday, August 6th, 7-11:30 am**

**Entry Check Out: Sunday, August 11th, 9-11 am  
See General Rules on pages 28-29**

Premiums: 1<sup>st</sup> - \$3, 2<sup>nd</sup> - \$2, 3<sup>rd</sup> - \$1

DIVISION A - 6 yrs & Under

DIVISION B - 7-9 yrs

DIVISION C - 10-12 yrs

DIVISION D - 13-17 yrs

DIVISION E - ADULTS 18-64 yrs

DIVISION F - SENIORS 65 & over

DIVISION G - SPECIAL

DIVISION H - PROFESSIONAL

**FOR ALL BELOW: K) - FROM KIT OR PLANS  
S) - ORIGINAL**

**Use the following subplot for all classes**

a. Theme

CLASS A - CROCHETED

CLASS B - CROCHETED HANDSPUN

CLASS C - HAND-KNITTED

CLASS D - MACHINE KNITTED

CLASS E - SEWN

CLASS F - WOVEN

CLASS G - MACHINE EMBROIDERED

CLASS H - EMBELLISHED COMMERCIAL GARMENT

CLASS I - MULTI-TECHNIQUE

CLASS J - RECYCLED

**USE LOTS BELOW FOR CLASSES A - J**

LOT 1 - Infant's Garments

LOT 2 - Children's Garments

LOT 3 - Women's Garments

LOT 4 - Men's Garments

LOT 5 - Other

**USE SUBLOTS BELOW FOR CLASSES A-J**

SUBLOT a) - sweater

SUBLOT b) - bulky sweater

SUBLOT c) - patterned sweater

SUBLOT d) - jacket

SUBLOT e) - lined jacket

SUBLOT f) - pants

SUBLOT g) - shirt or blouse

SUBLOT h) - dress, daywear

SUBLOT i) - dress, nightwear

SUBLOT j) - infant set

SUBLOT k) - apron

SUBLOT l) - back pack

SUBLOT m) - booties

SUBLOT n) - collar

SUBLOT o) - gloves

SUBLOT p) - hat

SUBLOT q) - mittens

SUBLOT r) - purse or tote bag

SUBLOT s) - scarf

SUBLOT t) - shawl

SUBLOT u) - slippers

SUBLOT v) - other

SUBLOT w) - toys

SUBLOT x) - hand dyed

SUBLOT y) - Jewelry Organizer

*Residential*



*Commercial*

**Frederickson's B.F. Garbage, L.L.C.**

**Ron & Kevin Frederickson**

**P.O. Box 1913**

**Bonnars Ferry, ID 83805**

**Phone: (208) 267-3303 • Fax: (208) 267-3303**

*Serving all of Boundary County*



---

**THE BEST  
AGRONOMY  
TEAM IN  
THE PNW**

**DEDICATED TO  
REALIZING YOUR FARM'S  
FULL POTENTIAL**

**Dedicated People Who Care.**



**Bonnors Ferry 208-267-7473**

**WWW.MCGREGOR.COM**

## DEPARTMENT R HOME PRODUCTS

Superintendent: Tracy Roemer 360-201-8837  
Kim Sheets 206-947-2614

**Entry Check In: Monday, August 5th, 4-7 pm  
and Tuesday, August 6th, 7-11:30 am**  
**Entry Check Out: Sunday, August 11th, 9-11 am**  
**See General Rules on pages 28-29**

Premiums: 1<sup>st</sup> - \$3, 2<sup>nd</sup> - \$2, 3<sup>rd</sup> - \$1

DIVISION A - JUNIOR DIVISION  
DIVISION B - ADULTS 18-64 yrs  
DIVISION C - SENIORS 65 & over  
DIVISION D - SPECIAL  
DIVISION E - PROFESSIONAL

**No labels on bottles or jars.**

### CLASS A - PRE-MADE BASE

- LOT 1 - Red
- LOT 2 - White
- LOT 3 - With any added ingredient

### CLASS B - BRANDIED FRUIT (must be 21 to enter)

### CLASS C - BREWED BEVERAGE

(must be 21 to enter Lot 1 through Lot 13)

- LOT 1 - Red Wine, Sweet
- LOT 2 - Red Wine, Dry
- LOT 3 - Red Wine, Blends
- LOT 4 - White Wine, Sweet
- LOT 5 - White Wine, Dry
- LOT 6 - White Wine, Blends
- LOT 7 - Brandy Base
- LOT 8 - Vodka Base
- LOT 9 - Gin Base
- LOT 10 - Blended Base
- LOT 11 - Schnapps
- LOT 12 - Cordial
- LOT 13 - Champagne
- LOT 14 - Root Beer

### CLASS D - BEER

(must be 21 to enter Lot 1 through Lot 4)

- LOT 1 - Lager
- LOT 2 - Pilsner
- LOT 3 - Ale
- LOT 4 - Other

### CLASS E - KOMBUCHA

### CLASS F - CIDER

### CLASS G - MEAD

- LOT 1 - Traditional
- LOT 2 - Other

### CLASS H - OTHER

## DEPARTMENT S FARM PRODUCTS

Superintendent: Tracy Roemer 360-201-8837  
Kim Sheets 206-947-2614

**Entry Check In: Monday, August 5th, 4-7 pm  
and Tuesday, August 6th, 7-11:30 am**  
**Entry Check Out: Sunday, August 11th, 9-11 am**  
**See General Rules on pages 28-29**

Premiums: 1<sup>st</sup> - \$3, 2<sup>nd</sup> - \$2, 3<sup>rd</sup> - \$1

DIVISION A - JUNIOR DIVISION  
DIVISION B - ADULT 18-64 yrs  
DIVISION C - SENIORS 65 & over  
DIVISION D - SPECIAL  
DIVISION E - PROFESSIONAL

**No labels on bottles or jars.**

### CLASS A - APIARY PRODUCTS/HONEY

- LOT 1 - Extracted Honey (one pint)
- LOT 2 - Honeycomb (one pound)

### CLASS B - BUTTER

### CLASS C - CHEESE

- LOT 1 - Hard
- LOT 2 - Soft
- LOT 3 - Other

### CLASS D - POULTRY PRODUCTS: EGG (1/2 dozen)

- LOT 1 - Brown
- LOT 2 - Colored
- LOT 3 - White
- LOT 4 - Mixed

### CLASS E - HAY - FLAKE ONLY, TIED AND SECURE

- LOT 1 - 1st Cutting Alfalfa
- LOT 2 - 2nd Cutting Alfalfa
- LOT 3 - Clover
- LOT 4 - Grass - Alfalfa
- LOT 5 - Grass - Timothy, etc.
- LOT 6 - Cereal - Oats, Barley, etc.
- LOT 7 - Other



## Deep Creek Farmstand

Open Year Round!  
Monday-friday 6am - 8pm  
Weekends 8am - 8pm

With over 90 local vendors we offer fresh Raw A2-A2 whole milk, raw goat milk, A2-A2 cheese/yogurt, fresh baked goods, farmhouse decor and so much more!

PHONE: (208) 891-6656  
5327 DEEP CREEK LOOP  
BONNES FERRY, ID

www.deepcreekfarmstand.com @DeepCreekFarmstand

THE BEST OF CREEK REGION



## DEPARTMENT T LARGE HOUSEHOLD ACCESSORIES

Superintendents: Julie Newhouse 208 597-6957

**Entry Check In: Monday, August 5th, 4-7 pm  
and Tuesday, August 6th, 7-11:30 am**  
**Entry Check Out: Sunday, August 11th, 9-11 am**  
**See General Rules on pages 28-29**

Premiums: 1st - \$3, 2nd - \$2, 3rd - \$1

DIVISION A - BEGINNER 17years & Under  
DIVISION B - BEGINNER 18 years & Over  
DIVISION C - INTERMEDIATE  
DIVISION D - ADVANCED  
DIVISION E - SPECIAL  
DIVISION F - PROFESSIONAL

- **ALL quilts are to be clean with no offensive odors and free of pet hair.**
- **Due to space restrictions the entire quilt cannot be displayed. A 4x6 photo can be submitted with the quilt to be attached to the quilt for display after judging is complete.**

### CLASS A - TABLECLOTH

- LOT 1 - Crocheted
- LOT 2 - Embroidered
- LOT 3 - Machine Quilted
- LOT 4 - Other

### CLASS B - BEDSPREAD, not Quilted

- I Baby; II Bedspread; III Lap; IV Miniature
- LOT 1 - Appliqué
  - LOT 2 - Crocheted
  - LOT 3 - Embroidered
  - LOT 4 - Other

### CLASS C - QUILT

- I. Baby; II. Bedspread; III. Lap; IV Miniature,
- LOT 1 - All Flannel
  - LOT 2 - Appliqué
  - LOT 3 - Hand Quilted
  - LOT 4 - Machine Quilted by Exhibitor
  - LOT 5 - Combination Hand and Machine Quilt
  - LOT 6 - Embroidered
  - LOT 7- Made by Exhibitor and Professionally Quilted
  - LOT 8 - Photo
  - LOT 9 - Recycled
  - LOT 10 - Tied
  - LOT 11 - Other

### CLASS D - AFGHAN

- LOT 1 - Baby Afghan
- LOT 2 - Crocheted, Granny
- LOT 3 - Crocheted, Ripple
- LOT 4 - Crocheted, Other
- LOT 5 - Homespun
- LOT 6 - Knitted
- LOT 7 - Navajo
- LOT 8 - Waves
- LOT 9 - Woven

Mike Krejci  Custom Fabrication



# Krejci Welding Services

Gates & Fences  
Mobile Welding  
Structural  
Art & Design  
Certified  
Licensed & Insured

30 YRS EXP

**By Apt. Only 208-610-1443**



## Happy Tails Bed & Biscuit

Dog Boarding

Christine Papka  
Owner

1013 Lone Pony Ln.  
Bonners Ferry, Idaho

(208)267-2763  
[www.facebook.com/happytailsbedandbiscuitbonnersferry](http://www.facebook.com/happytailsbedandbiscuitbonnersferry)

208-267-9896  
208-290-6464

# Dennis Fitch Construction

Excavation • Road Building  
Cat Work • Gravel Hauling  
Site Preparation



## WESTERN PLEASURE GUEST RANCH

**ROLEY & JANICE SCHOONOVER**  
stay@westernpleasureranch.com  
call for reservations 888.863.9066  
208.263.9066



## FULL SERVICE PARTS & SALES

3 MINUTES SOUTH OF SANDPOINT IN SAGLE ON HWY 95

1-866-783-0047 | 208-263-4212

[PIERCEAUTOCENTER.COM](http://PIERCEAUTOCENTER.COM)



# WE ARE AT YOUR SERVICE

**FREE**  
Shuttle Service Available

Early Bird  
Drop Off Available

**DEPARTMENT U**  
**SMALL HOUSEHOLD ACCESSORIES**

(Sewn, Knitted, Crocheted, Embellished  
and other Handwork)

Superintendents: Jordan Burt 360-780-0703

Entry Check In: Monday, August 5th, 4-7 pm  
and Tuesday, August 6th, 7-11:30 am

Entry Check Out: Sunday, August 11th, 9-11 am

See General Rules on pages 28-29

Premiums: 1<sup>st</sup>- \$3, 2<sup>nd</sup>- \$2, 3<sup>rd</sup>- \$1

DIVISION A - 6 yrs & Under

DIVISION B - 7-9 yrs

DIVISION C - 10-12 yrs

DIVISION D - 13-17 yrs

DIVISION E - ADULTS 18-64 yrs

DIVISION F - SENIORS 65 & Over

DIVISION G - SPECIAL

DIVISION H - PROFESSIONAL

CLASS A - APPLIQUE

CLASS B - BRAZILIAN EMBROIDERY

CLASS C - CANDLE-WICKING

a) Ribbon

b) Thread

CLASS D - CREWEL

a) Ribbon

b) Thread

CLASS E - CROCHET

a) Thread

b) Yarn

CLASS F - EMBROIDERED

a) Hand

b) Machine

c) Raw Edge

CLASS G - KNITTED

a) Hand

b) Machine

CLASS H - LATCH HOOK

CLASS I - NEEDLEPOINT

CLASS J - PLASTIC CANVAS

CLASS K - RIBBON EMBROIDERY

CLASS L - TATTING

CLASS M - WOVEN

CLASS N - QUILTED

CLASS O - RECYCLED

CLASS P - PAINTED

CLASS Q - LACE

CLASS R - HANDSPUN

CLASS S - MACRAME

CLASS T - CHICKEN SCRATCH

CLASS U - CROSS STITCH

CLASS V - RUGS

CLASS W - OTHER

Use Lots below for Classes A - U & W

LOT 1 - Dish Towel

LOT 2 - Dish Cloths, set of 2

LOT 3 - Doily

a) up to 14"

b) 14"-24"

c) over 24"

LOT 4 - Doll, dressed

LOT 5 - Pillowcases, set of 2

LOT 6 - Child's Pillowcase only 1

LOT 7 - Placemats, set of 4

LOT 8 - Potholders, set of 2

LOT 9 - Hot Dish Carrier

LOT 10 - Table Runner

LOT 11 - Pillow

LOT 12 - Edgings

LOT 13 - Book Mark

LOT 14 - Fabric Hangings

a) Hand

b) Machine

c) Combination

1) Up to 18"

2) 18" - 36"

3) 36" and over

LOT 15 - Cross Stitch Hangings

a) Cross Stitch (counted) up to 5" x 7"

b) Cross Stitch (counted) up to 8" x 10"

c) Cross Stitch (counted) over 8" x 10"

1) 8 and 10 count

# ALL PURPOSE STORAGE

Household  
Commercial  
RVs  
Boats  
Cars  
Trucks

208.267.3859

Larry & Judy Dirks

1888 Crossport Rd

Bonnars Ferry, ID

# ASCEND CHECKING

We believe some things should just be free.



Open your Ascend Checking with tons of great benefits at [p1fcu.org/free](https://p1fcu.org/free).



SERVING THE CONSTRUCTION COMMUNITY SINCE 1990

Locally Owned & Operated

[www.TrussTek.com](http://www.TrussTek.com) | 208.267.7471 | 64679 Highway 2 | Bonners Ferry, ID 83805



## DEPARTMENT V PHOTOGRAPHY

Superintendent: Renee Murphy 208 946-7117  
Jenni Dougherty 208-610-0131

**Entry Check In: Monday, August 5th, 4-7 pm  
and Tuesday, August 6th, 7-11:30 am  
ALL ENTRIES MUST BE READY AND TURNED  
IN BY 11:30. NO EXCEPTIONS.  
Entry Check Out: Sunday, August 11th 9-11 am  
See General Rules on pages 28-29**

Premiums: 1st - \$3, 2nd - \$2, 3rd - \$1

DIVISION 1 - COLOR - ADULT  
DIVISION 2 - COLOR - JUNIOR  
DIVISION 3 - BLACK and WHITE - ADULT  
DIVISION 4 - BLACK and WHITE - JUNIOR  
DIVISION 5 - COLOR - PROFESSIONAL  
DIVISION 6 - BLACK and WHITE - PROFESSIONAL  
DIVISION 7 - SPECIAL

### PHOTOGRAPHY RULES

1. Prints previously entered in the Boundary County Fair are not eligible.
2. No copy machine prints will be allowed.
3. **One entry per lot/class.**
4. Best of Class ribbon will be awarded if there are more than three entries in the class and the photo merits the award.
5. **The photo entered must be taken by the exhibitor whose name appears on the entry tag.**
6. Photographs are judged on composition, technique, and impact.
7. **The decision of the judge is final.**
8. Junior Division is 8<sup>th</sup> grade or younger.
9. Rules for Amateurs - Division 1, 2, 3, 4 & 7  
**ALL PRINTS MUST BE ON CONSTRUCTION PAPER  
NOT EXCEEDING A ONE INCH BORDER AROUND  
THE PRINT.**
  - a. The maximum print size you can enter is 5" x 7".
  - b. No matte boards will be accepted in Division 1, 2, 3, 4 & 7.
  - c. Any prints that come framed will automatically be put in the professional class, with the exception of Class F - Historical.
  - d. Hint- Do not use double-stick tape.
10. Rules for Professional - Division 5 and 6.  
**ALL PROFESSIONAL PHOTOS MUST BE READY TO  
HANG WITH SECURE HANGERS WHEN ENTERED**  
*(Volunteer's not responsible for framed photos)*
  - a. Those entering in the professional class cannot enter in any other class.
  - b. The minimum print size for professional is 8" x 10".  
The maximum print size is 16" x 20".
  - c. Prints must be in ready to hang frames.
  - d. Please see *General Rules and Regulations* **page 28**, for the definition of professional.

### FILM & DIGITAL

- CLASS A - ANIMALS  
LOT 1 - Farm  
LOT 2 - Pets  
LOT 3 - Wild  
LOT 4 - Birds  
LOT 5 - Insects
- CLASS B - ARCHITECTURE (Building or Structure)  
CLASS C - FARM SCENES  
CLASS D - FLOWERS  
CLASS E - FOUR SEASONS  
LOT 1 - Spring  
LOT 2 - Summer  
LOT 3 - Fall  
LOT 4 - Winter
- CLASS G - HUMOROUS  
CLASS H - LANDSCAPE  
CLASS I - MARINE and WATER  
CLASS J - MISCELLANEOUS  
CLASS K - PANORAMIC  
CLASS L - PEOPLE and ANIMAL(S)  
CLASS M - PERSON/PEOPLE  
LOT 1 - Baby under one year (1 person)  
LOT 2 - Child 12 years and under (1 person)  
LOT 3 - Adult (1 person)  
LOT 4 - People in groups  
LOT 5 - Selfie
- CLASS N - PORTRAIT (primarily a posed photograph)  
LOT 1 - Baby under one year (1 person)  
LOT 2 - Child 12 years and under (1 person)  
LOT 3 - Adult (1 person)  
LOT 4 - People in groups
- CLASS O - SPORTS  
CLASS P - STILL LIFE  
CLASS Q - STORY SERIES  
(6-8 prints on one matte that tells a story)
- CLASS R - SKY  
CLASS S - TRANSPORTATION  
CLASS T - WEDDINGS  
CLASS U - SPECIAL EFFECTS (multiple exposures,  
multiple images, infra-red, bas-relief, blurred motion,  
computer enhanced, etc.)

\*Historical Photos may be displayed.



# NORTH40

OUTFITTERS

## JUNIOR LIVESTOCK

### FEED PROGRAM



SIGN UP &  
**SAVE!**

**10% OFF**

Regular Priced  
Livestock Feed &  
Show Supplements

SHEEP • HOG • CATTLE • POULTRY • EQUINE • GOAT • RABBIT

MUST PRESENT PROOF OF 4-H OR FFA MEMBERSHIP TO ENTER PROGRAM.  
NOT TO BE COMBINED WITH ANY OTHER OFFER.  
SEE SALES ASSOCIATE FOR MORE DETAILS.



**NORTH40**  
OUTFITTERS

Ponderay 477181 N. Hwy 95 | [north40.com](http://north40.com)



# Skywalker TREE CARE

Michael Richardson  
BS Forestry, ISA Certified Master Arborist

skywalkertreecare.com  
skywalkertreecare@gmail.com

(208) 610-4858



WWW.FARNORTHCOMPANY.COM



KERR SUPPLY  
automotive/industrial/welding  
fasteners/hydraulic hoses

6838 Main, PO Box 298,  
Bonners Ferry, ID 83805  
Phone: (208) 267-5531  
Fax: (208) 267-3546



## Erickson's Chic-N-Chop Restaurant, Inc.



Full Menu  
Family Dining  
Banquet Facilities

(208) 267-2431

Ronald & Edith  
Erickson

Box 1092 6421 South Main  
Bonners Ferry, Idaho  
83805



## Quality Custom Cabinetry For The Inland Northwest

"At Cabinets Northwest we are dedicated to making every detail of the cabinets in your home exceptional."

208.267.1039

CABINETSNORTHWEST.COM

41 SUNRISE ROAD, BONNERS FERRY, IDAHO

We understand this rural life like no one else.  
Drop in and see us!



CO-OP Gas & Supply Company is your propane, farm, home, and hardware cooperative.

As a member owned cooperative we pay dividends to our members annually on their purchases in profitable years. No other local farm and hardware store pays you dividends on your purchases. Being locally owned and operated means the money you spend here stays here, creating jobs for your friends and neighbors, and strengthening our economy as we have been doing for 89 years.

Why not drop by and see if membership at the CO-OP is right for you?

*Neighbors helping neighbors since 1934.*

**The CO-OP Gas & Supply Company 208.263.6820**  
**Propane \* Farm \* Home \* Hardware**

**125 Tibbetts Lane Ponderay, Id [coopgasandsupply.com](http://coopgasandsupply.com)**

# DEPARTMENT W VEGETABLES and HERBS

Superintendents: Angie Schnuerle 208 597-6307

Entry Check In: Monday, August 5th, 4-7 pm  
and Tuesday, August 6th, 7-11:30 am

Entry Check Out: Sunday, August 11th, 9-11 am  
See General Rules on pages 28-29

Premiums: 1st - \$3, 2nd - \$2, 3rd - \$1

DIVISION A - JUNIOR DIVISION  
DIVISION B - ADULT 18-64 yrs  
DIVISION C - SENIORS 65 & over  
DIVISION D - SPECIAL  
DIVISION E - PROFESSIONAL

1. The fair will furnish flats and plates where called for
2. Items may be added to entry form at entry time
3. See "HINTS" that may specify entry requirements
4. All entries in the division must be grown and prepared for entry by the exhibitor
5. Variety, if known, should be listed on the entry tag

## CLASS A - BEANS

**HINT: Long, straight, uniform color, stems on, unwashed, wiped clean.**

- LOT 1 - Beans, Green Bush, 10 Pods
- LOT 2 - Beans, Yellow Bush, 10 Pods
- LOT 3 - Beans, Green Pole, 10 Pods
- LOT 4 - Beans, Purple Pole, 10 Pods
- LOT 5 - Beans, Purple Bush, 10 Pods
- LOT 6 - Beans Other
- LOT 7 - Dragon Tongue, 10 Pods

## CLASS B - COLE CROPS

**HINT: Cabbage should be semi-peeled, solid, disease and damage free, stem off**

- LOT 1 - Broccoli, 1 Head
- LOT 2 - Brussels Sprouts, 1 Pint
- LOT 3 - Cabbage, 1 Head
- LOT 4 - Cabbage, 1 Head Chinese
- LOT 5 - Cabbage, 1 Head, Late
- LOT 6 - Cabbage, 1 Head, Red
- LOT 7 - Cauliflower, 1 Head
- LOT 8 - Chard 3 Stems
- LOT 9 - Kale 3 Stems
- LOT 10 - Kohlrabi (1" stem, roots off)
  - a) green
  - b) purple
  - c) other

- LOT 11 - Rhubarb, bunch of 5 ( pulled, 1" leaf)
- LOT 12 - Spinach, 3 Plants

## CLASS C - CORN

**HINT: Remove husks, 1/2" stem, do not trim end**

- LOT 1 - Corn, Sweet, 3 Ears
  - a) yellow
  - b) white
  - c) bi-color
- LOT 2 - Corn, Popcorn, 3 Ears

## CLASS D - CUCUMBER

**HINT: Uniform size, color, 1/2 " stem**

- LOT 1 - Cucumbers, 3, Pickling Under 3.5"
- LOT 2 - Cucumbers, 3, Slicing
- LOT 3 - Cucumber, 3, Lemon
- LOT 4 - Cucumbers, 3, Other

## CLASS E - PEPPER

**HINT: Uniform size, color, 1/2 - 1" stem**

- LOT 1 - Peppers, 3 Bell
  - a) green
  - b) red
  - c) yellow
  - d) purple
- LOT 2 - Peppers, 3 Hot
  - a) green
  - b) red
  - c) yellow
  - d) black
- LOT 3 - Peppers, 3 Wax
- LOT 4 - Cherry 3

## CLASS F - PUMPKIN

**HINT: Mature, ripened color stem on**

- LOT 1 - Pumpkin, Pie
- LOT 2 - Pumpkin, Jack-O-Lantern
- LOT 3 - Pumpkin, White
- LOT 4 - Pumpkin, Mini
- LOT 5 - Cinderella

## CLASS G - SQUASH

**HINT: Summer Skin penetrable by thumb nail, 1" stem**

- LOT 1 - Squash, 1 Pattypan
  - a) yellow
  - b) green
  - c) white
- LOT 2 - Squash, 1 Zucchini green
  - a) 8 inch and under
  - b) over 8 inch
- LOT 3 - Squash, 1 Spaghetti (late summer)
- LOT 4 - Squash, Yellow Zucchini
  - a) 8 inch and under
  - b) Over 8 inch
- LOT 5 - Squash, 1 Other Summer Variety
  - a) Crookneck
  - b) other

**HINT: Winter Harden shell, 1"-2" stem**

- LOT 6 - Squash, 1 Acorn
- LOT 7 - Squash, 1 Banana
- LOT 8 - Squash, 1 Buttercup
- LOT 9 - Squash, 1 Butternut
- LOT 10 - Squash, 1 Crookneck
- LOT 11 - Squash, 1 Hubbard
- LOT 12 - Squash, 1 Other Winter Variety
  - a) Blue Ballet
  - b) Cushaw
  - c) Delicates
  - d) DuLong
  - e) Futsu
  - f) Pondini
  - g) Other

## CLASS H - MISC. VEGETABLES (above ground)

- LOT 1 - Celery, 1 Bunch
- LOT 2 - Eggplant, 1
- LOT 3 - Gourds, 3
- LOT 4 - Lettuce, 1 Head
- LOT 5 - Okra, 3 pods
- LOT 6 - Peas, 10 Pods
- LOT 7 - Most Unusual Variety
- LOT 8 - Humorous
- LOT 9 - Other